

A Great Walk From The Three Greyhounds Inn and Back

This short walk around Shakerley Mere Nature Reserve is one which will give tremendous pleasure to nature lovers. Although the walk is short in terms of distance, it is long in interest. Information boards provide a wealth of detail and you will arrive back at the car with the impression that your journey was far in excess of 1 ½ miles.



www.thethreegreyhoundsinns.co.uk

Shakerley Mere and the surrounding woodland support a diverse range of wildlife and each season presents an ever-changing scene. The woodlands are host to most of the familiar species of birds, whilst Canada geese, mallard, heron, mute swans and black-headed gulls are a common sight on the waters of the mere. Cormorants fly to these waters from their coastal breeding grounds to feed on the fish, and more exotic visitors arrive at different times of the year. Heather thrives in the area and the heathland is of recognised importance and designated as a site of botanical interest. Fisherman can pit their skills against carp, bream, perch and predatory pike. This is a good walk with your dog and we welcome dogs in our 'Brandy Snug'.

How To Get There

Address for SatNavs: The Three Greyhounds Inn, Holmes Chapel Road, Allstock, Knutsford, Cheshire WA16 9JY.

Local Directions: The B5081 is used as a link between Middlewich and Knutsford. Close to where the road passes over the M6 there is a staggered junction with B5082. The Three Greyhounds Inn is situated near this junction on the B5082 road.

Parking: There are generous parking facilities at the pub. Alternatively, car parking is available at Shakerley Mere.

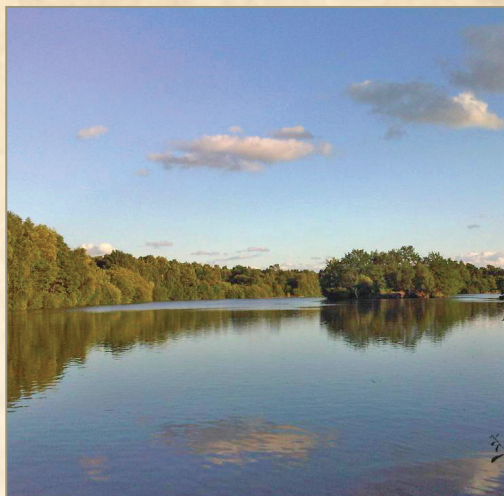
Length Of Our Pub Walk: 1 ½ miles. Map: OS Landranger 118 Stoke-on-Trent and Macclesfield (GR 730710).

The Walk

① On leaving the Three Greyhounds Inn turn left, and then immediately left again, to follow a roadside footpath. After 250 metres arrive at one of the entrances to Shakerley Mere Nature Reserve. There are a number of alternative walks which could be undertaken, although it is probably best to keep to a set configuration.



② Enter the site and walk forward to arrive close by the edge of the mere. Turn right and follow a well-defined path to shortly pass over a wooden footbridge. The path is never far from the water's edge and there are countless opportunities to observe the wildlife. The mere was formed after large excavations were carried out to recover a particular type of sand which was used in the manufacture of coloured glass. The ensuing hole was then filled with water and the surrounding area subsequently landscaped. A number of islands were also constructed.



③ Towards the southerly end of the mere, the path takes you away from the water's edge for a short distance, and then turns to the left. On reaching the head of the mere the path turns to the left and leads back to the entrance gate. Leave the site at this point and retrace your original route back to the Three Greyhounds Inn.

